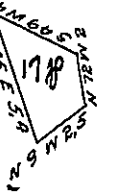


York County Shore



Lancaster County Shore

A Draught of Drake Island Situate in the River Susquehanna
in Manor township Lancaster County opposite to Maple Island
towards the York Shore and opposite to Storey Island towards the
Lancaster Shore containing seven ^{teen} perches strict measure surveyed
in pursuance of a warrant dated the 29th day of July A.D. 1814
granted to Jacob Musser

pr. Jacob Hibshman D.S.

To Samuel Cochran Esqr. }
Surveyor General. }

I approve of the above survey to be accepted in the Surveyor
Generals Office September 15th 1821.

Henry Carpenter D.S.

IN TESTIMONY that the above is a copy of the original remaining on file in
the Department of Internal Affairs of Pennsylvania, made
conformably to an Act of Assembly approved the 16th day of
February, 1833, I have hereunto set my Hand and caused
the Seal of said Department to be affixed at Harrisburg,
this thirtieth day of November 1907.

Henry Howell
Secretary of Internal Affairs.